

Dales

Area Committee Executive Summary

Unofficial June 2013 Data

Ward Priorities

Theme	Priorities	Key Actions	Outcome	Lead
Safer	<p>To reduce crime and Antisocial behaviour.</p> <p>Tackle, drug taking and dealing particularly on parks and open spaces.</p> <p>Assist in integration of Emerging Communities and families.</p> <p>Reduce repeat reporting of Domestic violence.</p>	<p>1. Visible patrols at key hotspot times and locations. In addition follow up of ASB/Crimes and problem solving by Neighbourhood Police Team and Community Protection in conjunction with ASB Team and ASB Officer.</p> <p>2. Coordination of work of Neighbourhood Services Community Protection Police Family and Communities Team at monthly NAT meetings. This focuses on Neighbourhood and Police priorities</p> <p>3. Integration of emerging communities</p> <p>4. Partnership work to reduce repeat calls regarding noise ASB with regard to residential properties</p> <p>5. Monthly website and neighbourhood alert updates for neighbourhood priority.</p> <p>6. DV Forum which looks at training, information and sharing best practice around DV issues</p>	<p>1. Reduction of ASB by 30% Crime reduction of Serious Acquisitive Crime in line with Force Targets. Reduction of Fear of Crime and ASB in Neighbourhood Surveys.</p> <p>2. Closer partnership working and successful outcomes with regard to issues raised at NAT.</p> <p>3. Increased community cohesion and reduced reports of ASB amongst emerging communities.</p> <p>4. Reduction in repeat calls with same perpetrator in residential noise issues.</p> <p>5. Increased community confidence measured in neighbourhood surveys.</p> <p>6. Reduction in repeat reporting and increased safeguarding.</p>	<p>Sgt Hunter</p> <p>Greg Foister (NDO)</p> <p>F&C Team SEND STARA</p> <p>ASB officer/NPT/CP</p> <p>Sgt Hunter</p> <p>NDO/NPT</p>

Ward Priorities

Neighbourhoods	<p>To tackle levels of fly tipping and bins on streets.</p> <p>To reduce dog fouling, Improve local parks.</p> <p>Ensure the views of local people assist in setting priorities.</p> <p>Support work of Community Associations and groups</p>	<ol style="list-style-type: none"> 1. Monitor progress of actions at monthly NAT meeting including the delivery of the Neighbourhood Transformation plan. Street Scene teams and Community Protection focussing on fly tips and dog fouling at hot spots, and targeting streets. 2. Consultation re equipment at Colwick Woods and Parkdale Playgrounds. 3. Local Issues Meeting, Budget consultation, Ward Walks. 4. Assistance with involvement in the Area 6 Partnership for new Area based grants to Community Centres, youth and economic development projects. Support for Community Associations. 	<p>1. Improvement in cleanliness Improved partnership work with NOM and CPO</p> <p>New ideas for tackling dog fouling are being discussed.</p> <p>2. Consultation meetings in April regarding final designs and work to start early summer.</p> <p>Regular Ward walks and local issues meetings and community Engagement</p> <p>Brief meetings, support with business planning and Partnership set up WITYH Community Associations. Support for development of Community Association.</p>	<p>Neighbourhood Operation Manager</p> <p>Martin Harris Parks Section/NDO</p> <p>NDO</p> <p>NDO</p>
----------------	---	--	---	---

Ward Priorities

<p>Families</p>	<p>Assistance to families in Stress</p> <p>Support for integration of East European and Roma families</p>	<p>1. Family Community Teams/Sure Start Centre/ Social Care team/Epic/SEND/Renewal Trust/3M project/ Greenway Centre regular weekly sessions. Summer and other holiday programmes.</p> <p>2. St Anns Advice Centre providing targeted welfare rights sessions for Roma families at Greenway Centre in addition to regular open sessions.</p>	<p>At risk families have been supported. Good coordination between all partners across Oliver hind Youth Centre Greenway Centre and partners.</p> <p>Improved attendance at all youth Facilities.</p> <p>Good relationships and better integration of Roma families.</p>	<p>Family and Communities team Dawn Claypole Delroy Peterkin</p>
<p>Health</p>	<p>Improve well being on the community.</p> <p>Tackle high levels of coronary heart disease and diabetes.</p> <p>Provide health promotion advice.</p>	<p>1. Health Promotion Team support health groups and activities for Heart Health, Cancer and Lifestyle risks alcohol, smoking healthy eating, physical activity, mental health).</p> <p>2. Targeted work with South Asian families carried out by Muslim Community Organisation</p>	<p>Local Sessions being planned Funding being sought to provide health awareness and exercise sessions targeting Taxi drivers elders and young people.</p>	<p>Peter Dodsley Public Health</p> <p>Muslim Community Organisation</p>

<p>Working</p>	<p>More Jobs, Training and Volunteering opportunities</p>	<p>1. The Renewal Trust Childcare Voucher Scheme: Carlton Road Job Shop –Enterprise Coaching Service provides advice to local start up businesses community businesses.</p> <p>2. NAT and Area 6 Committee members agreed to organise an Area 6 Jobs fair on 1st July in Sneinton Market Square</p>	<p>Local training and business support session have been run at MCO Centre</p> <p>NDOs convening a planning group with assistance from Economic Development Section.</p>	<p>Renewal trust Business Support team.</p> <p>NDO Economic Development Officer</p>
----------------	---	--	--	---

Community Engagement

Ward Walks (future Ward Walks for 2014/15 are currently being planned and will be available for the next Committee)

Area/Estate	Date/Time	Meeting Point
Ena Ave, Holbourn Ave	4th September, 9am.	TBC
Greenwood Road, Rippon Road, Hereford Road, Ashworth Crescent.	2nd October, 9am.	TBC
Cosby Road Beckford Road Hoten Road Radbourne Road Colwick Woods Court	13th November, 9am.	TBC
Linton Rise Findern Green Weedon Close Kilby Avenue Langham Avenue Cardale Road and Nether Close	11th December, 9am.	TBC

Community Meetings

Group	Date	Venue
Sneinton Tenants and Residents Group	12 th September 2013, 7pm	St Christopher's Church Hall

Community Engagement

Events Delivered

Event	Lead Partners	Date/Time	Venue
Local Jobs Fair	NCC	1 st July 2013	Sneinton Market
Sneinton Festival	Sneinton Festival Group	13 th July 2013	Sneinton
Local Issues Meeting	NCC	18 th July 2013	MCO
Greenway Park Meeting	NCC	1 st August 2013	Greenway Centre
Colwick Woods Play Area Meeting	NCC	2 nd August 2013	Colwick Woods Play Park

Community Engagement

Future Events and Activities Planned

Event	Lead Partners	Date/Time	Venue
Sneinton Week of Action	NCC – NAT	W/C 9 th September 2013	Sneinton
Democracy Week	NCC	W/C 14 th October 2013	TBC
Budget Consultation	NCC	18 th October 2013 TBC	Sneinton Market
Police street by street walks	Local Beat Team	17 th October and 12 th December	Sneinton
Local Issues Meetings	NCC	11 September 22 October 12 November	Sneinton Library St Cyprians BANKA

Finance

Ward Councillor Budgets

Total Amount allocated this period £13,579

Budget Remaining Unallocated £10,555 (inc of 2012-13 allocation)

Area Capital Fund

Total Amount allocated this period £72,082

Budget Remaining Unallocated £132,131 (inc of 2012-13 allocation)

Others – Section 106, NCH Environmentals, Other Funding

None this period

Ward Summary

Ward Performance Snapshot

Dales						
Area	Jun-13 Volume	Jun-12 Volume	Direction of Travel	YTD 13/14 Volume	YTD 12/13 Volume	Direction of Travel
Crime	96	90	↑	327	260	↑
ASB	71	74	↓	198	240	↓
DV	11	16	↓	45	48	↓
Area	May-13 Volume/ Score	May-12 Volume/ Score	Direction of Travel	YTD 13/14 Volume/ Average Score	YTD 12/13 Volume/ Average Score	Direction of Travel
Cleanliness	77	86	↓	81.5	84	↓
Graffiti	13	21	↓	38	32	↑
Fly tipping	64	82	↓	144	146	↓
Deliberate Fires	1	1	↔	5	1	↑

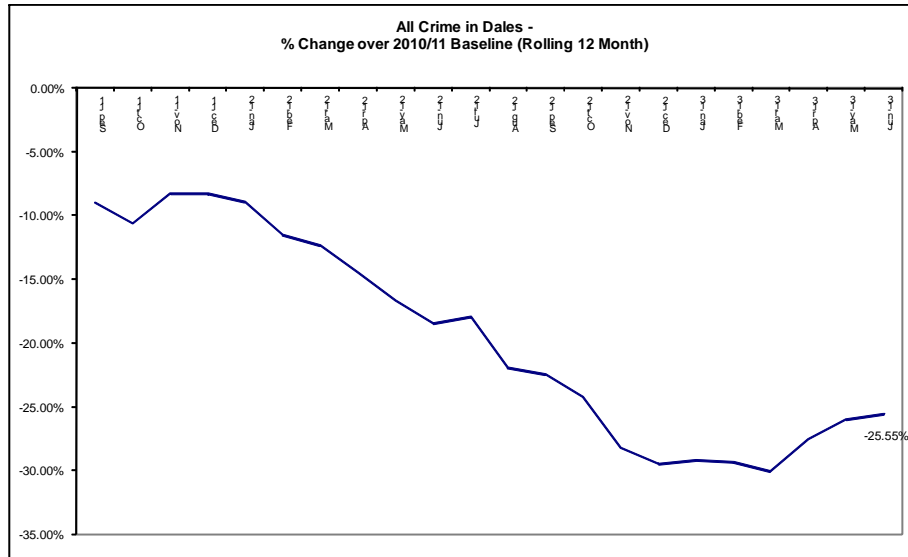
Key

↑	Most recent data shows an increase compared to the corresponding period last year.
↓	Most recent data shows a reduction compared to the corresponding period last year.
↔	Most recent data shows no change compared to the corresponding period last year.

Ward NAT Details

DALES WARD						
WARD	NAT Meeting					
	NAT Members (TORs i.e. Nom. Ndo. CP Team Leader etc.)					
	Date	Time	Venue	Name of Officer	Email Address	
Dales Ward	04-Jul	9-10:30am	27-31 Renewal Trust Building, Carlton Road	Greg Foister, Neighbourhood Development Officer	greg.foister@nottinghamcity.gov.uk	
	01-Aug			Sgt Richard Hunter, Local Police Beat Manager	richard.hunter@nottinghamshire.pnn.police.uk	
	05-Sep				CPTL Lee-Ann Mullen, Enforcement Officer	lee-ann.mullen@nottinghamshire.pnn.police.uk
	03-Oct				Leon Lewis, Nottingham City Homes	leon.lewis@nottinghamshire.pnn.police.uk
	07-Nov				Delroy Peterkin, NOM	delroy.peterkin@nottinghamcity.gov.uk
	05-Dec				Michelle Blainey, Woodlands CCTV	michelle.blainey@nottinghamcityhomes.org.uk

Crime

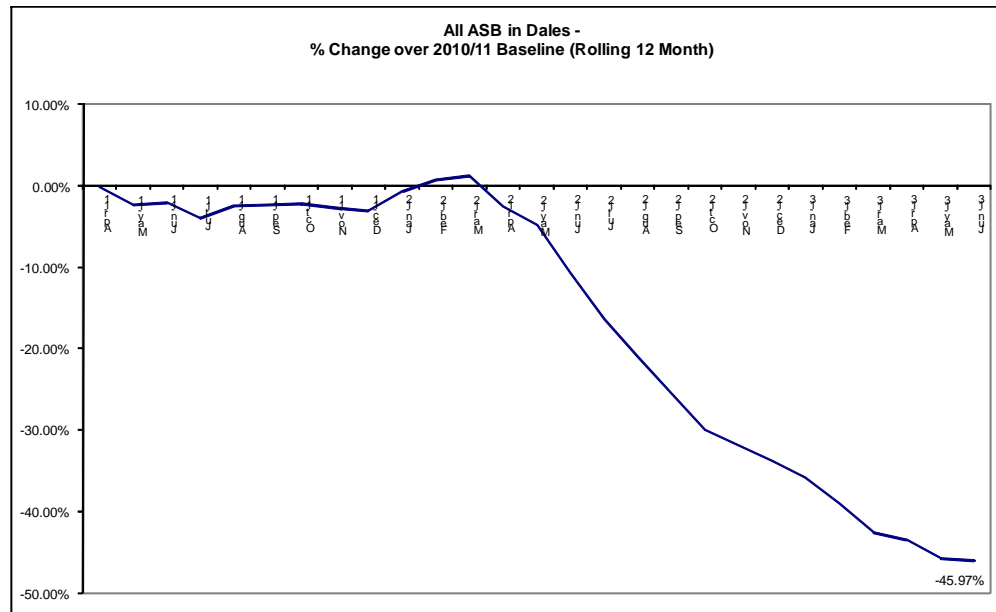


Red*	6 more Crimes	6.67%
Amber		
Green		

*Refers to June 2013 compared to June 2012

- The above baseline graph compares the *rolling* 12 month total of crime in Dales to a *fixed* 12 month 2010/11 baseline. The current 12 month total is showing a reduction of -25.55% against the baseline.
- In June 2013 there were 96 crimes which is an increase of 6.67% (6 crimes, see above RAG rating) compared to June 2012. The Division as a whole experienced an increase in all crime of *approximately* +6.4%.
- Year to date crime in the ward has increased by 25.77% (67 crimes, April – June 2013 compared to April – June 2012, see Table 1 of page 5). In the Division as a whole, all crime is up by *approximately* +6.2%.
- The largest volume increase this month was in theft, which was up 8 crimes 50.00%, see Table 1 of page 5).
- Crimes with a domestic flag assigned to them were down by 5 crimes (June 2013 compared to June 2012, see Table 2 of page 5). For June 2013 the ward ranked 9th for this type of crime out of the 20 wards in the Division.
- The rate (per 1000 of population) of all crime in Dales is just below the average rate for the 20 wards (figures are year to date, see Table 3 of page 6).

All ASB



Red		
Amber		
Green*	3 less incidents	-4.05%

*Refers to June 2013 compared to June 2012

- The above baseline graph compares the *rolling* 12 month total of ASB in Dales to a *fixed* 12 month 2010/11 baseline. The most recent 12 month total is showing a reduction of 45.97% against the baseline.
- In June 2013 there were 71 ASB calls in the ward. This is a reduction of 4.05% (3 calls, see above right RAG rating) compared to June 2012. The Division as a whole experienced a reduction of *approximately* 19% on this measure.
- Year to date ASB in the ward has reduced by 17.5% (42 calls, April – June 2013 compared to April – June 2012, see Table 5 of page 7). In the Division as a whole, ASB is down by *approximately* 25%.
- The rate (per 1000 of population) of ASB in Dales is worse than the average rate for the 20 wards (May 2013 figures, see Table 4 of page 7).

Crime Figures

Table 1: Crime Types by Month and Year to Date

Type	Jun-12	Jun-13	Change	% Change	Prev YTD	YTD	Change	% Change
Autocrime	7	7	0	0.00%	15	23	8	53.33%
Burglary	3	5	2	66.67%	11	20	9	81.82%
Burglary Other	2	2	0	0.00%	13	7	-6	-46.15%
Damage	18	21	3	16.67%	49	65	16	32.65%
Drugs	8	9	1	12.50%	23	30	7	30.43%
Fraud		1	1		1	6	5	500.00%
Other	4	3	-1	-25.00%	13	11	-2	-15.38%
Personal Robbery	2	1	-1	-50.00%	4	3	-1	-25.00%
Robbery Business			0		2	2	0	
Sexual	1	3	2	200.00%	7	5	-2	-28.57%
Theft	16	24	8	50.00%	52	77	25	48.08%
Theft from Person	1	4	3	300.00%	3	7	4	133.33%
Threats	3	4	1	33.33%	8	9	1	12.50%
Violence	25	12	-13	-52.00%	59	62	3	5.08%
Grand Total	90	96	6	6.67%	260	327	67	25.77%

Table 2: Crimes with a Domestic Flag Assigned to them by Month

Ward	Jun-12	Jul-12	Aug-12	Sep-12	Oct-12	Nov-12	Dec-12	Jan-13	Feb-13	Mar-13	Apr-13	May-13	Jun-13	Ward Rank (Apr-13)
DALES	16	15	16	8	12	16	14	11	14	12	14	20	11	9

Crime Figures

Table 3: Crime Types by Rate (per 1000 of population) of the 20 Wards – Figures are Year to Date 2012/13

WARD	ALL CRIME	AUTOCRIME	BURGLARY	DAMAGE	PERSONAL ROBBERY	THEFT	THEFT FROM PERSON	VIOLENCE
ARBORETUM	34.10	2.33	4.49	3.95	2.42	6.19	0.63	6.19
ASPLEY	23.27	1.65	1.70	3.69	0.28	3.40	0.17	6.70
BASFORD	17.46	2.41	1.60	3.02	0.19	3.33	0.06	4.07
BERRIDGE	22.14	2.68	1.82	3.16	0.32	5.42	0.59	4.45
BESTWOOD	16.65	1.07	1.31	4.18	0.30	1.97	0.12	4.30
BILBOROUGH	20.13	2.08	1.91	3.69	0.30	2.86	0.00	4.76
BRIDGE	21.94	1.44	0.92	2.15	0.10	8.61	0.51	4.31
BULWELL	26.37	1.86	1.30	5.08	0.68	6.81	0.37	5.20
BULWELL FOREST	18.66	1.32	1.18	2.94	0.73	6.02	0.15	3.31
CLIFTON NORTH	14.59	1.63	1.16	3.49	0.39	2.41	0.08	2.79
CLIFTON SOUTH	14.12	0.79	1.51	2.37	0.22	2.94	0.07	4.09
DALES	19.87	1.40	1.21	3.95	0.18	4.68	0.43	3.77
DUNKIRK & LENTON	26.10	4.85	4.03	2.75	0.37	6.32	0.46	2.84
LEEN VALLEY	18.87	0.65	1.96	3.55	0.37	5.14	0.19	3.64
MAPPERLEY	19.69	2.02	1.77	3.16	0.19	3.98	0.00	3.34
RADFORD & PARK	21.74	3.01	2.76	1.74	0.87	6.23	0.41	2.86
SHERWOOD	22.45	1.82	1.62	1.95	0.71	9.41	0.06	3.57
ST ANNS	22.98	2.15	1.29	3.94	1.58	2.15	0.36	6.01
WOLLATON EAST & LENTON ABBEY	12.76	1.00	1.41	1.41	0.00	4.82	0.00	1.41
WOLLATON WEST	12.21	1.42	1.56	1.63	0.00	3.60	0.20	1.29
WARD AVERAGE	20.30	1.88	1.83	3.09	0.51	4.81	0.24	3.94

	Highest Rate
	Second Highest Rate
	Third Highest Rate

All ASB Figures

Table 4: All ASB by Rate (per 1000 of population) of the 20 Wards (Figures are May 2013)

WARD	RATE (PER 1000 OF POP.) June 2013
ARBORETUM	6.73
ASPLEY	4.31
BASFORD	3.46
BERRIDGE	4.29
BESTWOOD	3.58
BILBOROUGH	4.11
BRIDGE	5.74
BULWELL	5.57
BULWELL FOREST	3.75
CLIFTON NORTH	3.26
CLIFTON SOUTH	3.15
DALES	4.31
DUNKIRK & LENTON	3.66
LEEN VALLEY	2.34
MAPPERLEY	4.35
RADFORD & PARK	4.08
SHERWOOD	2.92
ST ANNS	6.80
WOLLATON EAST & LENTON ABBEY	1.00
WOLLATON WEST	1.02
WARD AVERAGE	3.92

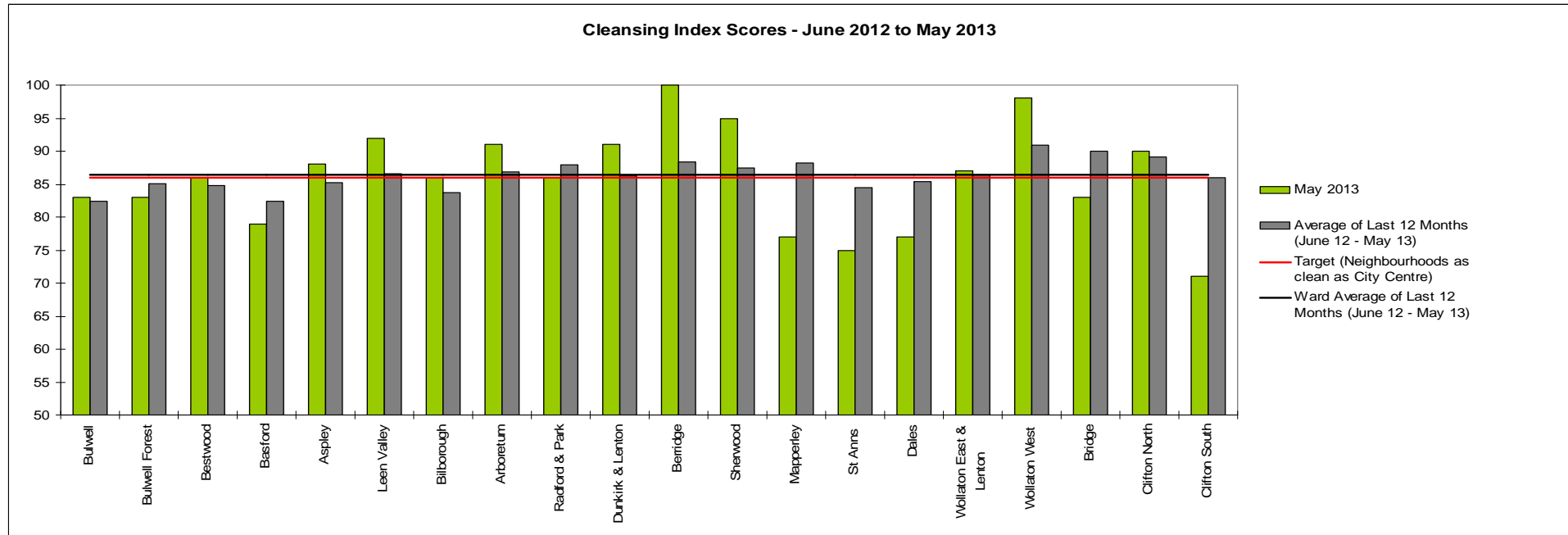
	Highest Rate
	Second Highest Rate
	Third Highest Rate

Table 5: All ASB by Month and Year to Date

	Jun-12	Jun-13	Change	% Change	Prev YTD	YTD	Change	% Change
All ASB Total	74	71	-3	-4.05%	240	198	-42	-17.50%

Cleanliness Index

This graph shows the position of your ward compared to other Wards



The “neighbourhood as clean as the city centre” benchmark target on cleanliness is to achieve a score of 86% in every ward. The 86% target is shown in red in the above graph.

To calculate the Cleanliness Index (CI) an agreed number of transects are surveyed across an area covering a range of land types. Each site surveyed is awarded a cleanliness grade based on a 7 point scale from A to D where Grade A: – no litter, and Grade D: - heavily littered. The maximum possible score of 100 is achieved when all sites achieve Grade A.

The Code of Practice for Litter and Refuse (COPLAR) requires councils to strive to reach an ‘acceptable’ standard of cleanliness (grade B or better) across the Council area. Grade A is the ultimate goal and is how a site should be immediately after sweeping but is almost impossible to maintain for any length of time. For example, a grade A site is completely free of litter – one cigarette butt takes it down to B+.

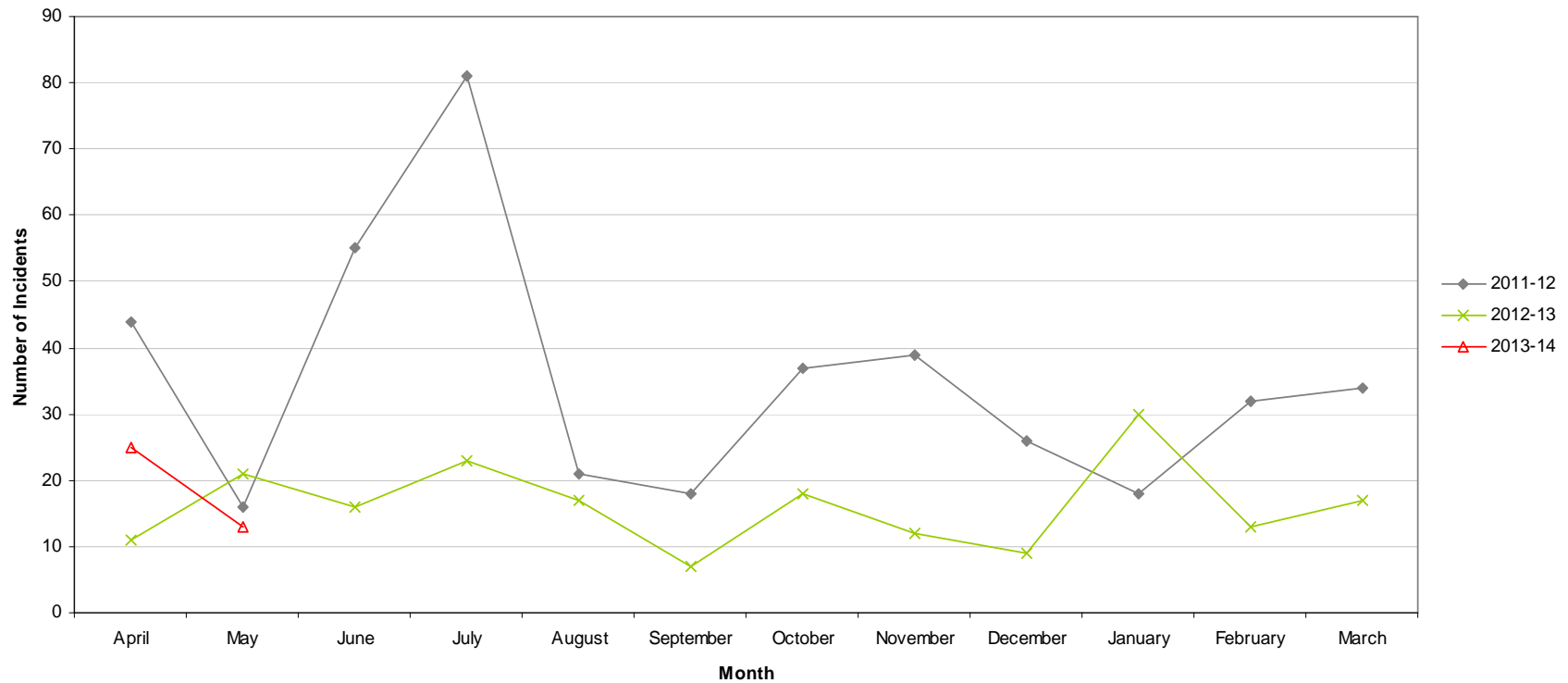
To achieve the manifesto commitment of Neighbourhoods as clean as the City Centre a target of 86 is required as that was the CI for the City Centre in May 2011. To give some context if all areas surveyed achieved a grade ‘B’ standard, this would equate to a cleanliness index of 67.

Graffiti Reports

RED		
AMBER		
GREEN	13 incidents	Decrease of 8

- All data refers to a comparison with the previous year's month
- It is proposed that performance over time graphs be used for each indicator
- Historic data for comparison is not available for dog fouling

Incidents of Graffiti - Dales

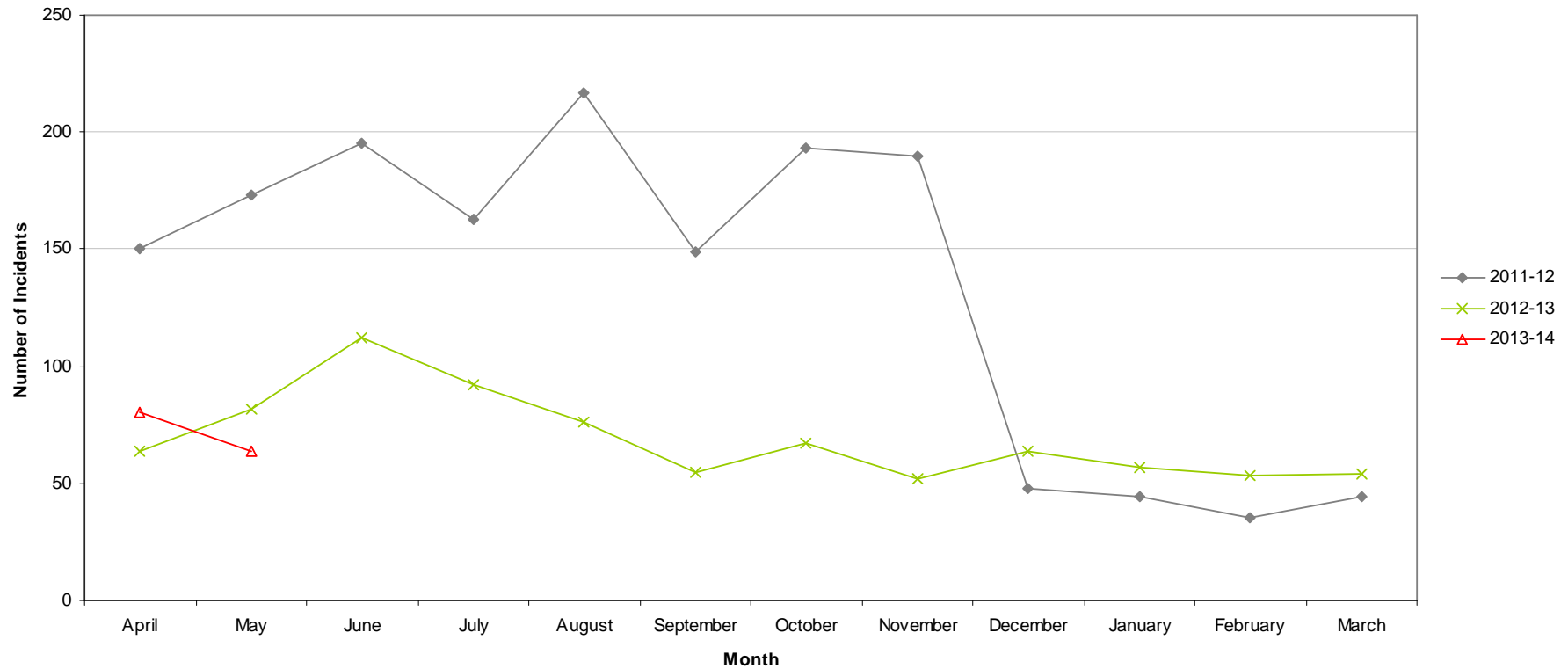


Fly Tipping

RED		
AMBER		
GREEN	64 incidents	Decrease of 18

- All data refers to a comparison with the previous year's month
- It is proposed that performance over time graphs be used for each indicator
- Historic data for comparison is not available for dog fouling

Incidents of Fly Tipping - Dales

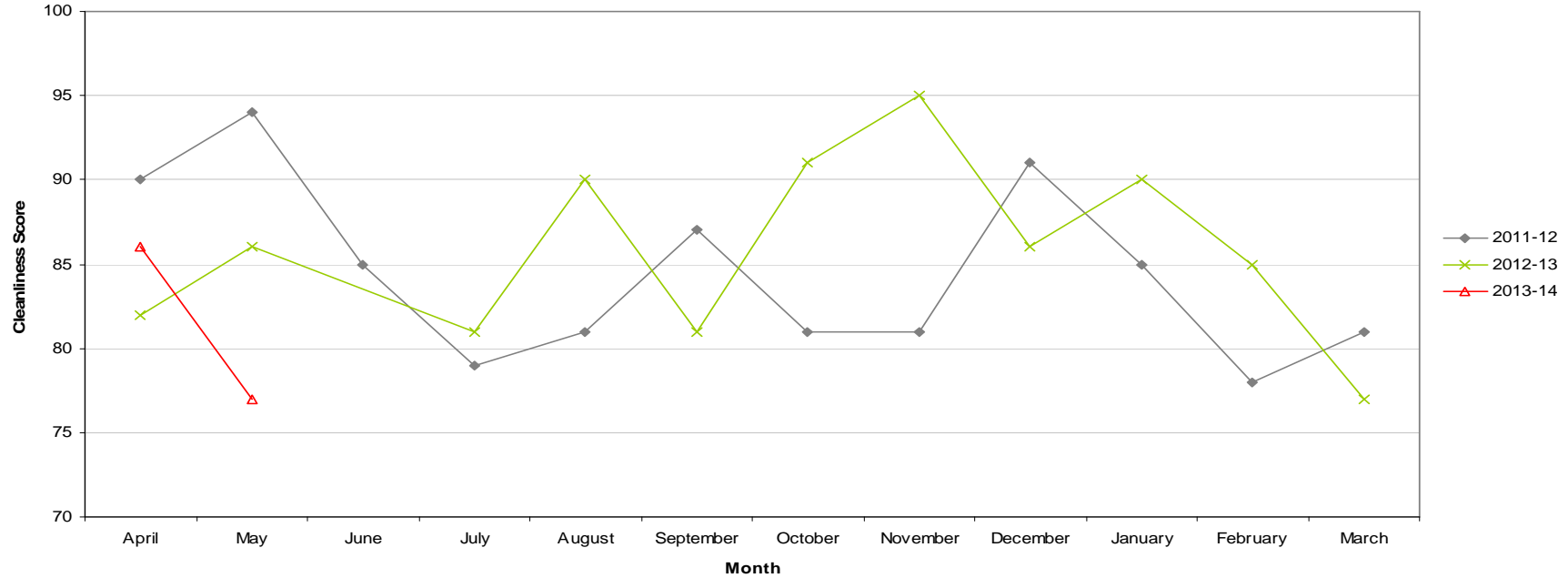


Cleanliness Index

Cleanliness Index Score	77
Performance compared to previous year	↓
Performance compared to neighbourhoods target of 86	↓

- All data refers to a comparison with the previous year's month
- It is proposed that performance over time graphs be used for each indicator
- Historic data for comparison is not available for dog fouling

Cleanliness Index - Dales



Unemployment Rate

Area	May-13			Change in last month		Change in last year	
	Number	Rate	City Rank	Number	%	Number	%
Arboretum	838	7.1	7	-21	-2.4	-13	-1.5
Aspley	1,204	10.6	1	-18	-1.5	-18	-1.5
Basford	722	6.5	9	-18	-2.4	-24	-3.2
Berridge	1,041	7.1	7	-40	-3.7	-52	-4.8
Bestwood	1,010	8.9	4	-22	-2.1	-26	-2.5
Bilborough	774	7.4	6	-35	-4.3	-30	-3.7
Bridge	670	6.4	10	2	0.3	-100	-13
Bulwell	1,076	9.9	2	-46	-4.1	16	1.5
Bulwell Forest	443	4.9	14	-3	-0.7	-23	-4.9
Clifton North	414	4.7	16	-13	-3	5	1.2
Clifton South	498	5.7	12	-17	-3.3	-28	-5.3
Dales	878	7.5	5	-40	-4.4	-21	-2.3
Dunkirk and Lenton	229	2.1	19	-7	-3	-42	-15.5
Leen Valley	333	4.8	15	-10	-2.9	-16	-4.6
Mapperley	692	6.2	11	-12	-1.7	-73	-9.5
Radford and Park	760	4	17	-19	-2.4	-33	-4.2
Sherwood	546	5.1	13	-38	-6.5	-67	-10.9
St Ann's	1,259	9.1	3	-22	-1.7	-5	-0.4
Wollaton East and Lenton Abbey	150	1.5	20	-3	-2	4	2.7
Wollaton West	230	2.5	18	-5	-2.1	-14	-5.7

This is an edited version of a report produced by: Geoff Oxendale, Information and Research Officer, Nottingham City Council. Claimant count of Job Seekers Allowance (JSA) is used as a proxy measure for unemployment.

Wards are ranked from 1 (highest Rate, per 1000 of population, of JSA claimants) to 20 (lowest Rate).

Housing

Dales Ward - Housing



Anti-social behaviour - St Anns (Dales Ward)

Indicator	Current Target	2010/11	2011/12	2012/13		
		Value	Value	Value	Status	Trend
% of ASB cases resolved - St Anns	97.6%	100%	97.41%	99.03%		
% of ASB cases resolved by first intervention - St Anns	75%	-	-	81.97%		n/a

Empty properties - Dales Ward

Indicator	Current Target	2010/11	2011/12	2012/13		
		Value	Value	Value	Status	Trend
Average void re-let time for Dales Ward (calendar days)	26	26.12	21.8	32.25		
Number of lettable voids Dales Ward	-	7	12	11		
Number of empty properties awaiting decommission in Dales Ward	-	8	2	1		

Estate star ratings (from Tenant Service Inspectors)



Indicator	2010/11		2011/12		2012/13		
	Value	Status	Value	Status	Value	Status	Trend
Estate star rating - Bakersfield	3 Star		3 Star		3 Star		
Estate star rating - Cardale	2 Star		3 Star		3 Star		
Estate star rating - Colwick	2 Star		3 Star		3 Star		
Estate star rating - Sneinton	2 Star		3 Star		3 Star		

Data prepared by Nottingham City Homes Performance Team







For more information please contact Tricia Quinn, Performance Review Manager on 0115 9157365 or Marcus Parton, Performance Review Officer 0115 915715

Housing

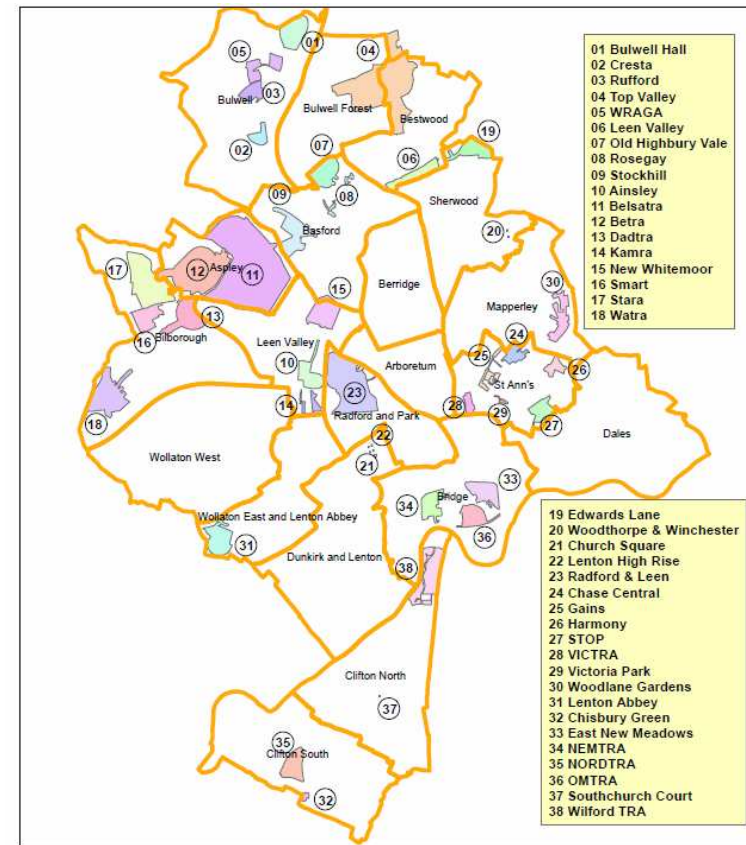
Rent Collection - St Anns

Indicator	Current Target	2010/11	2011/12	2012/13		
		Value	Value	Value	Status	Trend
Rent charged that has been collected - St Anns	100.2%	100.3%	101.4%	100%		

Key:

-  Performance on or exceeding target
-  Performance below target
-  Data only performance indicator
-  Performance has improved compared to two years ago
-  Performance has deteriorated compared to two years ago
-  Performance unchanged

Map of Tenants and Residents Associations by Ward



Data prepared by Nottingham City Homes Performance Team

For more information please contact Tricia Quinn, Performance Review Manager on 0115 9157365 or Marcus Parton, Performance Review Officer 0115 915715

Housing

Performance indicator definitions

Performance indicator	Definition
% of ASB cases resolved	This performance indicator monitors the proportion of ASB cases that Nottingham City Homes has successfully resolved. Data for this indicator is not available by ward and is reported by Housing Office.
% of ASB cases resolved by first intervention	This performance indicator monitors how many ASB cases Nottingham City Homes resolved on the first intervention e.g. written warning. Data for this indicator is not available by ward and is reported by Housing Office.
Average void re-let time (calendar days)	This performance indicator monitors how many empty properties Nottingham City Homes has re-let and the length of time it has taken. The void period is the number of calendar days including the day after the old tenancy ends right through to and including the day before the new tenancy starts.
Number of lettable voids	This performance indicator monitors the number of empty properties which are available for re-letting. Lettable empty properties are those which will receive repair work and then be let to a new tenant.
Number of empty properties awaiting decommission	This performance indicator monitors the number of empty properties which will not be re-let and includes those being decommissioned and / or demolished.
Estate star ratings	Nottingham City Homes Tenant Inspectors monitor the condition of estates and rates them according to a zero, one, two and three star standard. The estates are monitored every three months with a selection of streets (determined by tenants) covering all 42 estates.
Rent charged that has been collected	This performance indicator measures the amount of rent collected (including tenant arrears) as a percentage of rent due for the current year. Data for this indicator is not available by ward and is reported by Housing Office.

Community Protection

Data has been received from Community Protection and where postcodes have been listed these have been geo-coded and mapped to determine the Ward. All addresses relate to the address of the Perpetrator.

FPNs are not currently available at ward level.

In June 2013 there were

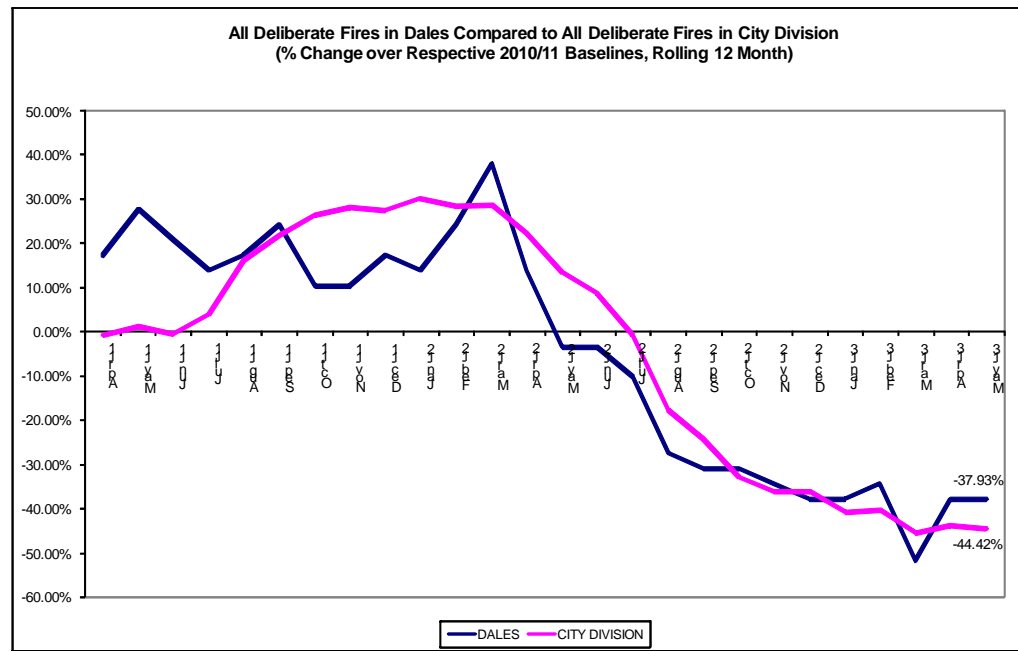
- **3 Statutory Notices for Environmental issues**
- **1 Suspended Possession Order for Drugs**

For enquiries regarding Community Protection court outcomes please contact the Operational Manager for the locality.

Fire

Table: Volume of Deliberate Primary and Secondary Fires by Ward

Ward	May-12	May-13	Change	% Change	Previous YTD	YTD	Change	% Change
Arboretum	1	1	0	0.00%	1	4	3	300.00%
Aspley	6	5	-1	-16.67%	7	11	4	57.14%
Basford	3	3	0	0.00%	11	5	-6	-54.55%
Berridge	6	4	-2	-33.33%	8	8	0	0.00%
Bestwood	3	6	3	100.00%	9	14	5	55.56%
Bilborough	9	1	-8	-88.89%	19	3	-16	-84.21%
Bridge	1	3	2	200.00%	2	5	3	150.00%
Bulwell	6	10	4	66.67%	15	14	-1	-6.67%
Bulwell Forest	3	1	-2	-66.67%	6	4	-2	-33.33%
Clifton North	1	1	0	0.00%	2	4	2	100.00%
Clifton South	3	4	1	33.33%	3	8	5	166.67%
Dales	1	1	0	0.00%	1	5	4	400.00%
Dunkirk and Lenton	0	0	0		0	1	1	
Leen Valley	3	1	-2	-66.67%	7	7	0	0.00%
Mapperley	3	1	-2	-66.67%	3	5	2	66.67%
Radford and Park	1	1	0	0.00%	2	1	-1	-50.00%
Sherwood	1	0	-1	-100.00%	1	0	-1	-100.00%
St. Ann's	3	4	1	33.33%	5	11	6	120.00%
Wollaton East and Lenton Abbey	0	1	1		1	2	1	100.00%
Wollaton West	0	0	0		0	2	2	
Total	54	48	-6	-11.11%	103	114	11	10.68%



- The above table shows volume of deliberate (primary and secondary) fires in the 20 wards. In May 2013 there was 1 fire in Dales. This involved a secondary fire in a domestic garden. Year to date (compared to the corresponding period last year) fires in the ward are up by 400% (from 1 fire to 5).
- The graph on the right shows a *rolling* 12 month total of deliberate fires in Dales against the *fixed* 2010/11 baseline. The performance of the City Division against *its* baseline has also been shown for comparison purposes.

Note: Where ward boundaries overlap with the City Centre fires that occurred in the City Centre have been **included** in the ward figures.

Methodology

Data has not been audited or verified and therefore must only be used as a reflection of crime.

Crime data and ASB calls have been extracted from the Police systems and mapped to ascertain which Ward they occurred in.

Where a ward boundary overlaps with the City Centre, crime data and ASB calls relating to the City Centre have been removed.

Where possible the most recent data is used, although for some areas this may be a month further in arrears.

Discussions continue with other agencies regarding what further data can be included.